



# SpeedcamAnywhere

Capture report for Buckingham Avenue



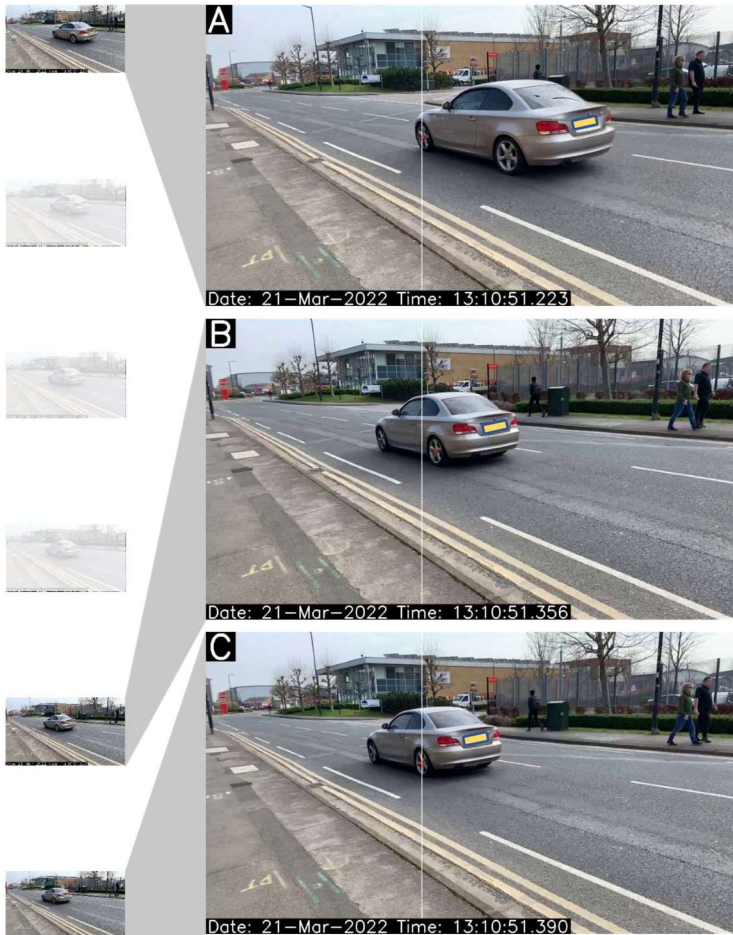
## Summary

On Monday 21st March 2022 at 13:10, a silver 2010 BMW 1 Series was captured driving at 36.1 mph\* in a 30 mph limit on Buckingham Avenue.



## Vehicle details

Make: BMW  
Model: 1 SERIES  
Year: 2010  
Wheelbase: 2660 mm



## Evidence

The front wheel of the vehicle was identified in frame A, which was captured at 13:10:51.223.

The rear wheel passed the same point as the front wheel between frames captured at 13:10:51.356 (B) and 13:10:51.390 (C).

Based on the position of the rear wheel in B and C, the rear wheel passed the same point as the front wheel in A after 0.165 seconds.

The vehicle's wheelbase is 2660 mm, so the vehicle travelled 2.660 m in 0.165 seconds, or 16.1 metres per second.

16.1 metres per second is equivalent to 36.1 mph

## Impact statement

Compared to the legal limit of 30 mph, a typical vehicle driving at 36.1 mph takes an extra 8.0 metres to stop, is 2.2 times more likely to kill a pedestrian on impact, generates 14.6% more CO2, 55.4% more NOx and produces 1.7 dBA more noise.

\*Accurate to within +/- 2 mph if wheel centres fall within red tolerance circles on images A, B and C